

-
-
-
-

Department of Motor Vehicles

State of Nebraska

**Exceptional
Service
delivered by
knowledgeable
people with
integrity,
enthusiasm, and
respect.**

2004 Annual Report



Dave Heineman, Governor
Beverly Neth, Director

May 2005

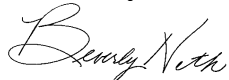
The Department of Motor Vehicles is pleased to provide you with a copy of its 2004 Annual Report. This Report covers the period of January 1, 2004 to December 31, 2004.

The Report contains statistical information concerning Nebraska's vehicles and drivers. A downloadable copy of the Report, as well as additional DMV related information and all DMV forms, is available on the DMV website at www.dmv.state.ne.us.

I want to thank my associates at the DMV, our customers, state legislators, county officials, members of our advisory boards and task forces, and Governor Heineman for their support. In many ways, the success of the DMV depends upon the continued support of these individuals.

If you have any questions regarding the information provided in the Annual Report or would like additional information regarding the Department of Motor Vehicles, please feel free to contact us at (402) 471-3900.

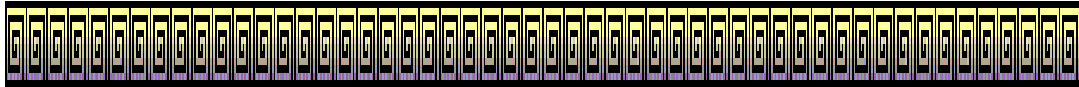
Sincerely,



Beverly Neth
Director

Table of Contents

Mission/Vision Statement.....	4
Executive Summary	5
Administration Division.....	7
Legal Division.....	7
Information Systems Division.....	10
Motor Carrier Services Division.....	11
Motor Carrier Services Statistics	12
Financial Responsibility Division	13
Financial Responsibility Statistics	14
Driver License Examining Division.....	15
Driver License Examining Statistics	17
Commercial Driver License Statistics.....	20
Total Licensed Drivers by Type of License/Permit.....	21
Highway Safety Division.....	22
Motorcycle Safety Education.....	32
Office of Juvenile Justice and Delinquency Prevention Funds.....	32
Traffic Violation Diversion Program.....	33
Driver and Vehicle Records Division.....	34
Driver and Vehicle Records Statistics	36
Licensed Drivers by County	37
Vehicle Registrations.....	38
Plate Types and Numbers by County	39



Nebraska Department of Motor Vehicles

Mission Statement

To promote public safety through education and regulation of drivers and motor vehicles,
and to collect revenues that provide resources for state and local government operations.

Vision Statement

Exceptional service delivered by knowledgeable people with integrity, enthusiasm and respect.



Department of Motor Vehicles Executive Summary

1. **Administration**

Includes director, deputy director, budget, human resources and support staff.
Responsible for overall assistance to the operations of all divisions within the DMV.
The director serves as the Governor's Highway Safety Representative and the chairperson of the Motor Vehicle Industry Licensing Board.

2. **Legal**

Performs a variety of functions within the DMV:

Administrative License Revocation (ALR)

13,038 sworn reports filed

5,518 hearings scheduled

11,054 license revocations

Legislation

Rules and Regulations

Manufacturer's Warranty Duties (Lemon Law)

Intoxilyzer training for the state

Fifteen-year license revocation reprieves reviewed for Board of Pardons – 30 reviews processed, 9 reprieves granted.

3. **Information Systems**

Provide the tools, expertise and support needed to develop more efficient methods to serve customers.

E-Commerce development

Expand on-line services

Installation and support of business applications

Complete implementation of the CVISN and PRISM projects

4. **Motor Carrier Services**

Administers a variety of programs relating to the trucking industry including the following:
International Registration Plan (IRP) – collects and distributes registration fees between member states.

Collected over \$98 million total fees

Retained \$29.8 million in Nebraska

Distributed balance to other IRP states

International Fuel Tax Agreement (IFTA) – equitably distributes fuel tax between member states.

Collected over \$23 million in fuel tax revenues

Single State Registration System (SSRS) – ensures that proper authority and insurance is being maintained by regulated carriers operating through Nebraska and member states.

Collected nearly \$3 million in fees

Interstate application program (BINGO card program) – ensures proper insurance for private or exempt carriers.

Issue certificates of titles for apportioned vehicles and audits IRP and IFTA returns.

5. Financial Responsibility

Identifies those individuals who do not drive safely, assists them in becoming safe drivers, denies driving privileges to those who cannot or will not drive safely and aids in the collection of traffic fines and child support order payments.

Suspended 62,442 driver licenses

Reinstated 50,461 driver licenses

Recorded 180,790 traffic violation convictions

6. Driver Licensing Examining

Responsible for ensuring individuals meet Nebraska licensing standards and requirements for the issuance of a driver license or state ID card.

Maintains 99 exam sites across the state with 14 permanent exam stations.

Processed 535,808 license and ID card applicants.

Certified 163 DMV approved Driver Safety Programs.

Sent 232,290 renewal notices to individuals reminding them to renew their license.

7. Nebraska Office of Highway Safety

Responsible for developing and implementing effective strategies to reduce the state's rates of traffic related injury and fatality rates. These strategies may take the form of the stand-alone projects and activities or more comprehensive long-term programs. Both traditional and innovative strategies are encouraged and utilized.

Administers the following types of federal funding:

Section 402 funds target traffic safety issues.

Section 157 Incentive funds are used to increase the usage of child safety seats.

Section 157 Innovative funds are used to increase seat belt usage.

Section 163 (.08 Incentive funds) provide evidentiary breath testing instruments and related equipment to law enforcement agencies and to reduce appeals to district court as result of ALR.

Section 405 Occupant Protection Incentive funds are used to increase the statewide safety belt usage.

Section 410 Impaired Driving funds provide equipment and training to reduce alcohol and other drug involvement in traffic crashes.

Section 411 Data funds support adoption and implementation of highway safety data and traffic records programs.

Section 2003b, Child Occupant Protection Education funds are used to increase child safety seat use among rural, low-income, and minority populations.

The Office of Juvenile Justice and Delinquency Prevention (OJJDP) provides additional funding to enforce the underage drinking laws through community coalition groups.

The Motorcycle Safety Education Act provides state funding for motorcycle rider training courses.

8. Driver and Vehicle Records

Maintains the titling and registration records of 2 million motor vehicles.

Processes all license plate orders and validation stickers for all 93 counties.

Issues all specialty plates.

Provides Help Desk (technology and business support) for county officials and the general public.

Maintains the records of 1.3 million licensed drivers in the state.

Approves and maintains self-insurance companies in Nebraska.

Maintains the Motor Vehicle Insurance Database.

ADMINISTRATION DIVISION

The Administration Division is the support services office for the Department of Motor Vehicles. The division includes the director, deputy director, accounting and finance manager, human resources manager and support staff. Functions in the Administration Division provide overall assistance to the operations of all sections within the Department of Motor Vehicles. Additionally, the director is the Governor's Highway Safety Representative and, as such, is responsible for oversight of the state's annual federal highway safety allocated funds. The director also serves as the chairperson of the Motor Vehicle Industry Licensing board.

LEGAL DIVISION

The Legal Division performs a variety of tasks within the Department of Motor Vehicles. Primary duties involve administrative hearings, legal advice, legislation, rules and regulations, legal documents, intoxilyzer training and administrative license revocation program, manufacturer's warranty duties, fifteen-year license revocation reprieves, claims board and the health advisory board.

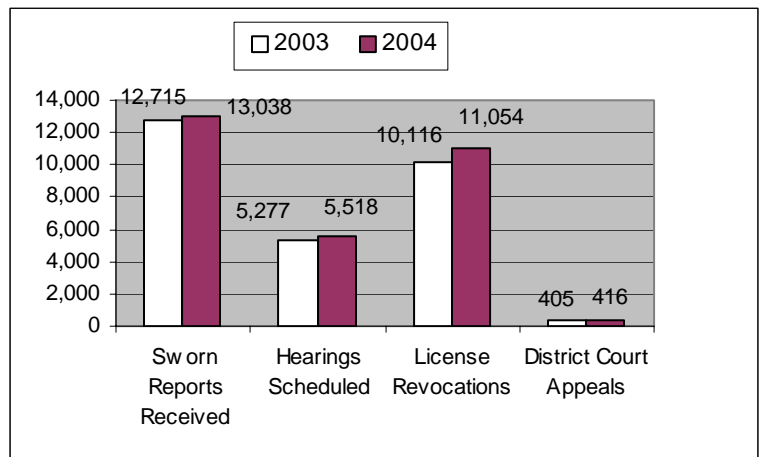
Administrative Hearings

All administrative hearings for the Department are conducted by the Legal Division. Hearings are held for commercial driver license issues such as disqualifications, third party testers and commercial driver instructors; financial issues involving bankruptcies and self-insurance; and issues relating to Motor Carrier Services, such as protests under the International Registration Plan (IRP) and the International Fuel Tax Agreement (IFTA); and motor vehicle tax objections.

The majority of hearings are for Administrative License Revocations. Law enforcement officers have the authority to take the license of a driver who refuses or fails a chemical test. The motorist may contest the automatic revocation by petitioning for a hearing. The Department holds a hearing to decide the merit of the driver's claim. In 2004, there were 13,038 sworn reports received, 5,518 hearings scheduled and 11,054 licenses revoked. Motorists may appeal the DMV decision to the District Court. The Legal Division processed 416 District Court appeals during 2004.

Rules and Regulations, Contracts, Legal Documents

Rules and Regulations are developed through the Legal Division. New and revised rules and regulations are initiated by changes in statutes, require a public hearing and are reviewed and approved by the Attorney General and the Governor.



In 2004, the following rules were promulgated in response to statutory changes:

- Procedures for contested cases in administrative license revocation hearings
- Fifteen-year license revocation reprieves
- Pretrial diversion programs for traffic tickets
- Boat & ATV Registrations
- CDL revisions

The Legal Division works with other DMV divisions, the public and other agencies to develop these rules and regulations.

In addition, the Legal Division reviews and drafts contracts and other legal documents involving other agencies, outside companies and the public.

Fifteen-Year License Revocation Reprieves

A person whose license has been revoked for 15 years may file an application for reinstatement after seven years of the revocation have passed. The Legal Division reviews each application and makes a written recommendation to the Board of Pardons. In 2004, 30 applications were processed; 9 were granted reprieves.

Manufacturer's Warranty Duties (Lemon Law)

The Legal Division provides lemon law information to interested consumers. It answers telephone inquiries and provides information on the Internet and through brochures. Nebraska is a founding member of the International Association of Lemon Law Administrators, which was organized to facilitate the flow of lemon law information across all jurisdictions on behalf of consumers. Nebraska's lemon law requires manufacturers to make a new vehicle conform to the vehicle's written warranty through either an informal settlement with a consumer or in response to a lawsuit in state court by a consumer.

Claims Board

All claims filed against the Department of Motor Vehicles are handled by a staff attorney representing the DMV before the Claims Board. The staff attorney coordinates the agency's response to the claim and any arguments made to the Claims Board.

Other Boards and Councils

When necessary, the Health Advisory Board, composed of medical specialists, is called to make a careful medical review and evaluation to determine whether a person is physically or mentally qualified to hold a driver license. A staff attorney is present at the board meetings.

A staff attorney handles protests under the International Registration Plan (IRP) and the International Fuel Tax Agreement (IFTA). A member of the Legal Division is designated to attend Federal Bankruptcy Court whenever hearings may be necessary to protest taxes or fees owed to the Department.

Nebraska Administrative License Revocation (ALR) Statistics

Year	DWI Arrests Reported	ALR Sworn Reports Received	* % of Sworn Reports Received Compared to Arrests	Petitions for Hearing Received	** % of Sworn Reports Received Petitioning for Hearing	Hearings Scheduled	Dismissals/ All Reasons	*** % of Dismissals	ALR 1 Year Refusal	ALR 90 Day	ALR 1 Year	# Total ALR Revocations	^ % of Sworn Reports Received Resulting in Revocation	Appeals Filed in District Court	% of Appeals/ ALR Revocations	Average Blood Alcohol Content
1993	12,140	11,122	91.6%	3,363	30.2%	2,973	680	6.1%	918	7,896	240	9,054	81.4%	N/A	N/A	0.174
1994	12,930	11,696	90.5%	3,895	33.3%	3,568	844	7.2%	1,084	8,265	813	10,162	86.9%	N/A	N/A	0.171
1995	12,841	8,268	64.4%	3,054	36.9%	3,014	920	11.1%	835	5,433	848	7,116	86.1%	N/A	N/A	0.172
1996	12,763	10,330	80.9%	3,231	31.3%	3,138	951	9.2%	865	6,047	1,179	8,091	78.3%	217	2.7%	0.174
1997	13,119	11,217	85.5%	3,971	35.4%	3,698	1,685	15.0%	985	6,497	1,586	9,068	80.8%	N/A	N/A	0.170
1998	13,439	11,048	82.2%	4,066	36.8%	3,748	1,577	14.3%	914	6,245	1,710	8,869	80.3%	N/A	N/A	0.169
1999	13,422	10,881	81.1%	4,336	39.8%	4,026	1,725	15.9%	897	6,072	1,727	8,696	79.9%	N/A	N/A	0.168
2000	11,948	9,852	82.5%	3,958	40.2%	3,650	1,660	16.8%	834	5,268	1,802	7,904	80.2%	N/A	N/A	0.169
2001	12,166	10,283	84.5%	4,196	40.8%	3,883	1,675	16.3%	746	5,521	1,798	8,065	78.4%	387	4.8%	0.164
2002	13,154	11,718	89.1%	5,152	44.0%	4,799	2,061	17.6%	780	6,479	1,972	9,231	78.8%	430	4.7%	0.159
2003	13,415	12,715	94.8%	5,744	45.2%	5,277	2,418	19.0%	811	7,052	2,253	10,116	79.6%	405	4.0%	0.156
2004	N/A	13,038	N/A	6,209	47.6%	5,518	2,414	18.5%	862	7,642	2,550	11,054	84.8%	416	3.8%	0.157

January 1, 1993 - Administrative License Revocation (ALR) Law
 January 1, 1994 - .02 BAC (Zero Tolerance) Under 21 Drivers
 August 28, 1999 - Open Container Law
 September 1, 2001 - .08 BAC Law

* ALR Sworn Reports Received / DWI Arrests Reported = Percent of Sworn Reports Received compared to Arrests
 ** Petitions for Hearing Received / ALR Sworn Reports Received = Percent of Sworn Reports Received Petitioning for Hearing
 *** Dismissal - All Reasons / ALR Sworn Reports = Percent of Dismissals
 # Total ALR Revocations Processed/Refusal, 90 Day, and 1 Year Enhanced; included Automatic Revocations and after Hearings.
 ^ Total ALR Revocations / ALR Sworn Reports Received = Percent of Sworn Reports Received Resulting in Revocation

**INFORMATION SYSTEMS
DIVISION**

The Information Systems Division of the Department of Motor Vehicles provides the tools, expertise and support needed to develop more efficient methods to serve customers.

To meet this goal the division has personnel who specialize in:

- The management of computer systems on the IBM AS/400, IBM Mainframe and Intel platforms
- Ethernet networks
- The development, installation and support of technical solutions and business applications
- PC support, software installation and troubleshooting
- Project management

The focus of the DMV has been to provide customers with easy access to both services and data hosted by the DMV. In addition to the services provided through NOL (Nebraska On-Line – <http://www.state.ne.us>), on-line services are now available to the customers of our Motor Carrier Division. These services are available through the DMV Website or at <http://mcs.dmv.state.ne.us/mcsmain.htm>.

As the DMV moves towards more accessible services, coordination and cooperation with other state agencies is critical. Digital technologies are being developed and implemented to maintain and improve the security of our personal identities while making our services and information easily available through the DMV web page. (www.dmv.state.ne.us)

Throughout the year, emphasis was placed on the continued development of the e-commerce components of the CVISN (Commercial Vehicle Information Systems and Networks) project, design, integration and implementation of the PRISM (Performance and Registration Information Systems Management) system into our CVISN plan, improvement of the performance of the wide area network, as well as continued development of a new version of the VTR (Vehicle Title and Registration) system.

In 2005, we will complete the implementation of the CVISN and PRISM projects, will convert to the new VTR system and will implement changes prescribed in legislation.

The IS Division will also participate in the installation of PC technologies in our county offices, implementation of the USA PATRIOT Act, MCSIA (Motor Carrier Safety Improvement Act) and automated driver license testing. We will also expand on-line services to include vehicle assessment estimation, specialty plate ordering, driver license reinstatement and commercial vehicle plate search.

**MOTOR CARRIER SERVICES
DIVISION**

The Division of Motor Carriers' "One-Stop Shop" administers a variety of programs relating to the trucking industry:

- The International Registration Plan (IRP), a vehicle registration program whose purpose is to collect and distribute registration fees between member states.
- The International Fuel Tax Agreement (IFTA), an agreement between member states for the purpose of equitable distribution of fuel tax.
- The Single State Registration System (SSRS), a program designed to ensure that proper authority and insurance is being maintained by regulated carriers operating through Nebraska and other member states.
- The Interstate Application Program (Bingo Card Program), whose purpose is to ensure proper insurance has been filed for private and/or exempt carriers operating through Nebraska.
- The issuance of certificates of title, noting of liens, and collection of sales tax and tire fee for apportioned vehicles.
- The auditing of motor carrier fuel and mileage records, in accordance with the IRP and IFTA agreements.

Major Activities in 2004:

The only significant legislative change that affected the division in 2004 was the passage of LB 560 which gave the Nebraska carrier enforcement division the authority to retrieve license plates and registrations for carriers revoked under the PRISM program.

Other accomplishments include:

- Implementation of our web-based IFTA tax returns. By the end of 2004, there were over 1,200 IFTA tax returns filed by taxpayers over the web.
 - Completed the implementation of PRISM, a program where we partnered with Federal Motor Carrier Safety Administration (FMCSA) to prevent unsafe carriers from receiving IRP credentials.
 - A record-setting number of completed audits: 174 IRP audits and 150 IFTA audits.
-

Motor Carrier Services Statistics – 2004

Nebraska Based Carriers	
IRP Carriers	4,054
IRP Fleets	4,158
IFTA Carriers	4,216
SSRS Carriers	2,459
Resident Bingo Carriers	1,421
Nebraska Based Vehicles	
Power Units	36,520
Trailer Units	67,320
Total Power/Trailer Units	103,840
Nebraska Based Carriers Field Audits	
IRP	173
IFTA	150
Audits Processed from other Jurisdictions	3,860
Titles Issued for Apportioned Vehicles	18,420
Liens Noted	8,348
Total IFTA Decals Issued	54,921
International Registration Plan	
Fees Distributed to other IRP States	\$48,486,308
Nebraska IRP Fees to Highway Trust Fund	\$25,607,399
Total IRP Fees Collected	\$74,093,707
International Fuel Tax Agreement	
Taxable Gallons	277,551,778
Tax Paid Gallons Paid at Nebraska Retail Outlets	262,172,503
Net Gallons (calculated)	15,379,275
Tax Distributed to other IFTA States	\$19,072,858
Nebraska Tax Collected on Returns	\$4,243,426
Total Tax Collected through the IFTA Program	\$23,316,284
Total Fuel Tax Paid by IFTA Carriers (calculated)	\$68,832,841
277,551,778 x average tax rate (.248)	
Single State Registration and Bingo Card Fees	
Fees Distributed to other SSRS States	\$2,163,264
Nebraska Fees to General Fund	\$751,363
Total SSRS and Bingo Fees Collected	\$2,914,627
Total MCS Fees and Tax Collection	
Fees Distributed to Highway Trust Fund	\$29,850,825
Fees Distributed to the General Fund	\$751,363
Fees Distributed to other States	\$67,559,166
Total MCS Fees and Taxes Collected	\$98,161,354

**FINANCIAL RESPONSIBILITY
DIVISION**

The goal of the Financial Responsibility Division is to identify those individuals who do not drive safely, to assist individuals in becoming safe drivers or to deny driving privileges to those who cannot or will not drive safely, and aid the courts

in collecting traffic violation fines and child support order payments.

Major Activities in 2004:

SR-22 Certificates of Insurance Program

Under the financial responsibility law, an SR-22 certificate of insurance is required for license reinstatements for some license suspensions and revocations. The DMV is required to monitor this type of insurance for a specific time. If an individual cancels or fails to maintain the SR-22 coverage for the required length of time, their driver license will be suspended until coverage is restored. American Family has joined Dairyland, Progressive, and Guaranty National in electronically filing SR-22 certificates of insurance.

In 2004, the Financial Responsibility Division gained internet access to the Nebraska Trial Court Case Search System. This access allows the FR staff to search all county and district court records, with the exception of Douglas County District Court. Many times, a search of court records is needed to assist an applicant through the reinstatement process.

Financial Responsibility Statistics

<i>Traffic Violation Suspensions/Revocations</i>	
Court-Ordered Suspensions	5,873
Insurance Cancellation Suspensions	8,827
Failure to Comply Suspensions	18,625
Nonresident Violator Compact Suspensions	1,827
Point Revocations	2,323
ALR Revocations	11,054
CDL Disqualifications Revocations	81
No Proof Insurance Suspensions	6,927
Accident Suspensions	1,937
Violate Support Order	3,785
Underage 21 Fail Complete Driver Improvement	1,183
Total Suspensions/Revocations	62,442
<i>Traffic Violation Reinstatements</i>	
Court-Ordered Suspension Reinstatements	5,105
Insurance Cancellations Reinstatements	6,050
Failure to Comply Reinstatements	17,449
Nonresident Violator Compact Reinstatements	1,716
Point Revocation Reinstatements	1,992
ALR Reinstatements	7,928
CDL Disqualifications Reinstatements	37
No Proof Insurance Reinstatements	6,341
Accident Reinstatements	1,531
Support Order Reinstatements	1,154
Underage 21 Fail Complete Driver Improvement	1,158
Total Reinstatements	50,461
<i>Miscellaneous</i>	
Employment Driving Permits Issued	879
Traffic Violation Convictions	180,790

**DRIVER LICENSE
EXAMINING DIVISION**

The goal of the Driver License Examining Division is to ensure that persons who meet Nebraska's identification and licensing requirements are issued a permit, operator's license or commercial driver license and that individuals who meet the

identification requirements set forth in state statute are issued a State ID Card. It is our goal to provide top quality service that is applied fairly and consistently to all applicants in a helpful manner.

Major Activities in 2004:

Conduct Examinations

During 2004, 91 examiners and staff assistants processed 535,808 applicants in 99 exam stations statewide. This included new applicants (licensed individuals who moved to Nebraska from another state, individuals who had never been issued a license document before and individuals whose Nebraska license document had been expired over one year) and renewal applicants.

Development and full integration of a CDL Third Party Database

A Federal grant enabled us to develop a CDL third party database to reduce the vulnerabilities that existed in the CDL program. From this, a pilot project began in mid-2003 that required third party examiners who participated in the project to notify the Department via the database of all CDL skills test appointments at least 24 hours in advance. This allowed Department personnel the opportunity to perform unscheduled audits by viewing the third party examiner's appointment schedule. These same third party examiners were also required to enter their pass/fail results into the database within five days. This gave Department managers the capability to access the database to compare pass/fail rates of third party examiners against each other and state driver license examiners. In 2004, the pilot project was expanded to all CDL third party examiners. Training was held in regional locations throughout the State. The creation of this database has greatly enhanced the monitoring of CDL third party testing in Nebraska. Nebraska's CDL database was showcased nationwide in 2004 to Driver's License Administrators and other interested parties.

Renewal Notices

Renewal notices are sent 90 days in advance of the expiration of a driver license or State ID card. In 2004, the Department sent out 232,290 renewal notices. Of those, 118,467 (51%) of the applicants presented, as requested, a completed renewal notice to examining staff, an action that greatly expedited the applicant's time spent at the DMV.

Other Divisional Activities:

- Sixty-four CDL Third Party Testers (companies) were audited. DMV certified that individuals who work for these companies are authorized to administer skills testing for applicants who desire a commercial driver license. The Federal Motor Carrier Safety Administration requires the DMV to audit these companies each year. The audit consists of a review of paperwork and sample retesting of drivers that have previously passed.
- Eleven Commercial Driver Training Schools were audited. Commercial driver training schools teach individuals how to drive a commercial motor vehicle. During each audit, the facilities of the school are inspected to make sure all requirements are met as outlined in the rules and regulations.
- One hundred and seven DMV approved Driver Safety Courses were audited, five schools were added and two schools dropped their certification. The Department currently has 163 DMV approved Driver Safety Courses. DMV certified that instructors who work for these courses provide 20 hours of classroom training and 5 hours of behind the wheel training for individuals between the ages of 14-18. These instructors are also authorized to administer the DMV drive test upon completion of the course. The audit consists of a review of their paperwork and their DMV approved drive test route.
- The Nebraska Driver's Manual and written tests (English and Spanish versions) were updated with legislative changes from the previous year's legislative session.
- The interactive driver license practice test was updated with legislative changes from the previous year's legislative session. This interactive test can be found on the Department's website and assists individuals studying for the written driver license examination. The website is: www.dmv.state.ne.us
- State statute allows physicians, law enforcement officers or individuals who are concerned about another individual's capability to operate a motor vehicle safely to request a re-examination of the individual. If the Agency's investigation shows that a re-examination is warranted, the individual is required to appear before an examiner on a stated date and time at a specific exam office. During the re-examination, the applicant must present a medical and vision statement that meets the Department's minimum standards and pass the written and drive tests. If the applicant is unable to meet the medical and vision minimum standards or pass the written or drive tests, his or her license is cancelled. In 2004, 733 applicants were re-examined. Of those applicants, 21% retained their license, 10% voluntarily surrendered their license and 69% had their license cancelled.
- Level I and II Fraudulent Document Recognition Training was held for all Divisional staff during 2004. This is a model training program created by the American Association of Motor Vehicle Administrators. Ongoing fraudulent document recognition training will be held annually.

Driver License Examining
Written and Drive Test Statistics

Class "O" Operator's License	New	Renewal	
Waived Written Test	65%	100%	
Waived Drive Test	67%	100%	
Passed Written Test	47%	NA*	
Passed Drive Test	65%	53%	
Class "M" Motorcycle License	New	Renewal	Endorsement
Waived Written Test	13%	100%	58%
Waived Drive Test	0%	100%	57%
Passed Written Test	46%	NA*	51%
Passed Drive Test	78%	NA*	86%
Provisional Operator's Permits			
Waived Written Test	41%		
Waived Drive Test	7%		
Passed Written Test	58%		
Passed Drive Test	68%		
Course Waiver for Written Test	40%		
Course Waiver for Drive Test	51%		
Learner's Permits			
Class "O" Waived Written Test	5%		
Class "M" Waived Written Test	5%		
Class "O" Passed Written Test	52%		
Class "M" Passed Written Test	52%		
School Permits (no waivers)			
Passed Written Test	63%		
Passed Drive Test	68%		
School Bus Permits			
Waived Written Test	0%		
Waived Drive Test	60%		
Passed Written Test	87%		
Passed Drive Test	78%		

* Statute waives written test upon renewal

Driver License Examining Statistics

Total Applicants Tested in 2004..... 535,808

Note: Numbers represent applicants tested, not documents issued.

Commercial Driver License (Class A, B & C)	
Class A New	16,088
Class A Renewal	9,496
Class B New	8,097
Class B Renewal	2,717
Class C New	1,076
Class C Renewal	362

Restricted Commercial Driver License (Class B & C)	
New.....	177
Renewal.....	32

Learner's Permit Commercial (LPC) 4,199

Seasonal Permits 272

Operator's License (Class O)	
New.....	98,049
Renewal.....	179,304

Motorcycle License (Class M)	
New.....	21
Renewal.....	4

Motorcycle Endorsement 28,175

Provisional Operator's Permits (POP) 29,751

State Identification Cards 48,245

Learner's Permits	
Class O	50,385
Class M.....	2,702

School Permits 11,004

LPE (School Learner's Permit) 6,553

School Bus Permits..... 7,471

Farm Husbandry Permits (Tractor) 150

Miscellaneous	
Reinstatements.....	17,461
Recalls.....	611
Restriction/Endorsement/Change or Remove.....	7,816
Duplicate/Replacement Commercial Driver License.....	3,848
Out of State/Early Renewals	1,444
Corrections	298

2004 Driver License Examining Document Types

Document Type/Class	Min. Age	Renewal Times	& Information	Involved Issuance	Duplicate Issuance	Full Cost
Operator's License, Class O	17	Age 21, then every 5 yrs.	Must have held POP for 1yr, <3 pts. on record	State/County	County	\$23.75 For 5 yr. license
Motorcycle License	17	Age 21, then every 5 yrs.	Must have held POP for 1yr, <3 pts. on record	State/County	County	\$23.75 For 5 yr. license
School Permit SCP	14	2 yrs.	Max age 16	State/County	County	\$8.00
Provisional Operator's Permit (POP)	16	None	Expires on 18 th birthday	State/County	County	\$15.00
Learner's Permit, LPD	15	1 yr.		State/County	County	\$8.00
Learner's Permit, LPE	14	2 mo.	Max age 16	State/County	County	\$8.00
Farm Husbandry Permit (Special)	13	3 yrs.	Max age 16	State	State	\$5.00
Farm Husbandry Permit (Temporary)	13	6 mos.	Max age 16	State	State	\$5.00
School Bus Permit	18	1 yr.	On birthday	State	State	\$0
Commercial Driver's License (CDL) Class B & C	17	21 st birthday, then every 5 years	Intrastate only, and must be eligible for operator's license.	State/County	State/County	\$55.00
Commercial Driver's License (CDL) Class A	18	21 st birthday, then every 5 years	Intrastate only	State/County	State/County	\$55.00
Commercial Driver's License(CDL) Class A,B,C	21	5 yrs.	Interstate	State/County	State/County	\$55.00
Restricted CDL (RCDL)	18	21 st birthday, then every 5 years	Must have possessed operator's license for at least 1 year prior to issuance.	State/County	State/County	\$55.00
Commercial Drivers License Permit	17	6 mos.	Must be eligible for operator's license. 2 in 2 yrs.	State/County	State/County	\$10.00
Seasonal Permit	18	21 st birthday, then every 5 years	Must have possessed operator's license for at least 1 year prior to issuance.	State/County	State/County	\$10.00
State Identification Card	0	21 st birthday, then every 5 yrs		State/County	State/County	\$23.75
State Work Permit	16	6 mos.	Max 3 yrs.	State	State	\$45.00

The above are also available in "duplicate" format if lost.

Changes outside of renewal periods when turning in a document are considered "replacement" documents. Valid fields that can be changed include: name, address, height, weight, hair and eye color.

2004 Commercial Driver License Statistics

Commercial Driver License	Class A New	Class A Renewal	Class B New	Class B Renewal	Class C New	Class C Renewal
Waived General Knowledge	16%	100%	8%	100%	8%	100%
Waived Combination	15%	100%	NA	NA	NA	NA
Waived Airbrakes	16%	100%	8%	100%	23%	100%
Waived Passenger	49%	100%	13%	100%	9%	100%
Waived Tank Vehicle	28%	100%	10%	100%	0%	84%
Waived Hazmat	0%	0%	0%	0%	0%	0%
Waived Doubles/Triples	35%	100%	NA	NA	NA	NA
Waived Drive Test	10%	98%	6%	95%	6%	93%
Passed General Knowledge	53%	NA	44%	NA	47%	NA
Passed Combination	57%	NA	NA	NA	NA	NA
Passed Air Brakes	58%	NA	50%	NA	58%	NA
Passed Passenger	71%	NA	66%	NA	67%	NA
Passed Tank Vehicle	86%	NA	78%	NA	82%	NA
Passed Hazmat	49%	55%	42%	58%	52%	62%
Passed Doubles/Triples	67%	NA	NA	NA	NA	NA
Passed Pre-Trip	58%	NA	50%	NA	48%	NA
Passed Drive Test	81%	NA	86%	NA	90%	NA

In addition, 37% of the drive test customers used a 3rd party tester. Statistics are unavailable on passing rates.

*Per State Statute, renewal applicants are not required to take any written tests except for those renewing a CDL with a hazard materials endorsement.

Nebraska Total Licensed Drivers by Type of Licenses/Permits for 2004

Age	Regular Operator License Class O	Operator License/ Motor-cycle Class M	Motor-cycle Class M	Commercial Driver License						Learner's Permit		School Permit SCP	Pro- visional Operator Permit POP	Total License Drivers
				CDL A	CDL B	CDL C	CDL A & Motor- cycle	CDL B & Motor- cycle	CDL C & Motor cycle	For School LPE	For POP Class O & M LPD			
14	0	0	0	0	0	0	0	0	0	513	0	1,636	0	2,149
15	0	0	0	0	0	0	0	0	0	129	10,782	3,620	0	14,531
16	0	0	0	0	0	0	0	0	0	0	5,911	0	17,659	23,570
17	3,971	53	0	0	1	0	0	0	0	0	2,388	0	21,114	27,527
18	21,155	177	0	35	11	0	3	0	0	0	1,143	0	0	22,524
19	24,061	291	1	101	35	0	5	4	0	0	455	0	0	24,953
20	25,061	421	0	175	79	6	17	4	0	0	346	0	0	26,109
21	21,921	452	0	243	91	4	48	6	0	0	340	0	0	23,105
22	24,017	564	0	431	147	11	57	10	3	0	293	0	0	25,533
23	25,185	705	0	470	158	23	77	17	2	0	271	0	0	26,908
24	26,515	708	2	641	220	29	110	23	1	0	237	0	0	28,486
25-29	112,743	3,788	5	3,845	1,341	144	658	178	10	0	980	0	0	123,692
30-34	100,458	4,450	2	4,829	1,628	191	886	253	23	0	617	0	0	113,337
35-39	96,911	5,091	3	5,212	1,855	224	1,147	266	19	0	411	0	0	111,139
40-44	110,857	6,945	2	6,818	2,282	341	1,709	406	38	0	352	0	0	129,750
45-49	108,920	7,517	1	6,812	2,286	369	1,831	437	44	0	298	0	0	128,515
50-54	101,618	6,244	1	5,983	1,997	323	1,416	373	32	0	226	0	0	118,213
55-59	84,512	4,350	1	4,606	1,514	284	923	260	32	0	145	0	0	96,627
60-64	63,650	2,420	0	3,394	1,147	202	552	122	15	0	58	0	0	71,560
65-69	52,026	1,361	2	2,097	767	127	306	79	12	0	33	0	0	56,810
70-74	48,303	822	0	1,168	481	99	125	24	2	0	19	0	0	51,043
75-79	43,522	496	0	488	225	47	33	7	2	0	10	0	0	44,830
80-84	33,174	218	0	119	39	13	5	2	1	0	8	0	0	33,579
85-89	15,630	69	0	5	6	2	0	0	0	0	10	0	0	15,722
90-94	5,671	7	1	1	0	0	0	0	0	0	0	0	0	5,680
95-99	1,081	1	0	0	0	0	0	0	0	0	0	0	0	1,082
100 & over	97	0	0	0	0	0	0	0	0	0	0	0	0	97
TOTAL	1,151,059	47,150	21	47,473	16,310	2,439	9,908	2,471	236	642	25,333	5,256	38,773	1,347,071

<p>NEBRASKA OFFICE OF HIGHWAY SAFETY DIVISION</p>
--

The Nebraska Office of Highway Safety was established in 1967 to coordinate, develop, and implement Nebraska's annual traffic safety plan in accordance with the Federal

Highway Safety Act of 1966. Under the Act, the Governor shall designate the Governor's Highway Safety Representative whose responsibility is to oversee the state's annual federal highway safety allocation to reduce traffic-related injuries and fatalities.

During FY04, a total of \$3,497,885.40 was expended from federal highway safety funding allocations sections 402, 157 incentive, 157 innovative, 163, 2003(b), 405, 410, and 411 to a total of 393 individual projects and 46 grants. Over sixty-eight percent of the funds awarded directly benefited local, county, municipal government agencies, and local non-profit organizations. The remainder was awarded to state agencies for traffic safety projects.

The purpose of the plan is to identify and prioritize Nebraska's traffic safety problems that are contributing to traffic-related injuries and fatalities. The Plan establishes those priority problems and identifies the best opportunities to reduce traffic-related injuries and fatalities. The Plan also includes those system support activities that are necessary to carry out those direct impact projects.

Methods

Utilizing Nebraska data for fatal and injury (A and B type) crashes, four-priority emphasis areas have been identified: 1) Alcohol-related crashes; 2) Occupant Restraint Use; 3) Speed-related crashes, and 4) Youth (ages 16 to 20) related crashes. A fifth emphasis area (Other Factors) is utilized to address other issues when appropriate.

A total of 32 counties have been identified as priority counties and are given first consideration for grant awards and project activity. Remaining counties are considered for special programs and for assistance after the other 32 counties.

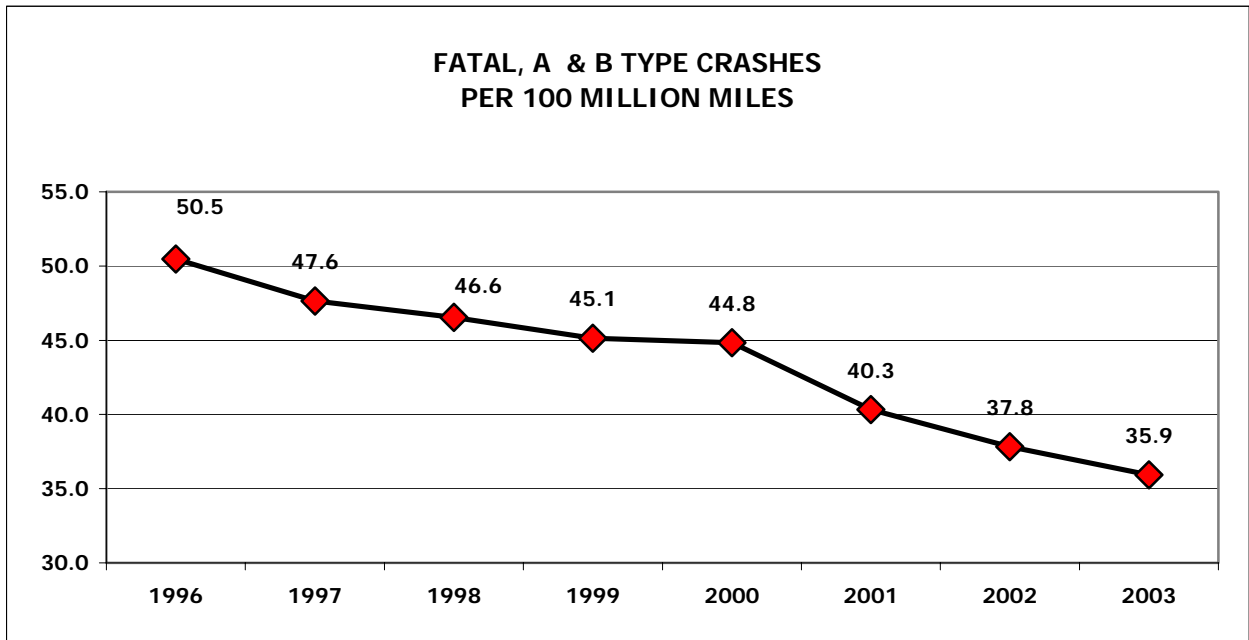
Measurable goals and objectives are determined using at least five years of historical data. The annual goals are selected using expected trends and the addition of those special grants and projects that are implemented during the Annual Plan period.

Individual grants are awarded based upon the quality of problem identification and the outcome performance expected utilizing identified strategies and activities.

Results

The overall goal of the Plan was to reduce **Fatal, A and B Injury Crashes** by 4% (6,012) in FY2004.

	1996	1997	1998	1999	2000	2001	2002	2003
All Crashes (Fatal, A & B)	8,173	7,999	8,016	7,930	7,908	7,237	6,916	6,682
Crash Rate	50.5	47.6	46.6	45.1	44.8	40.3	37.8	35.9



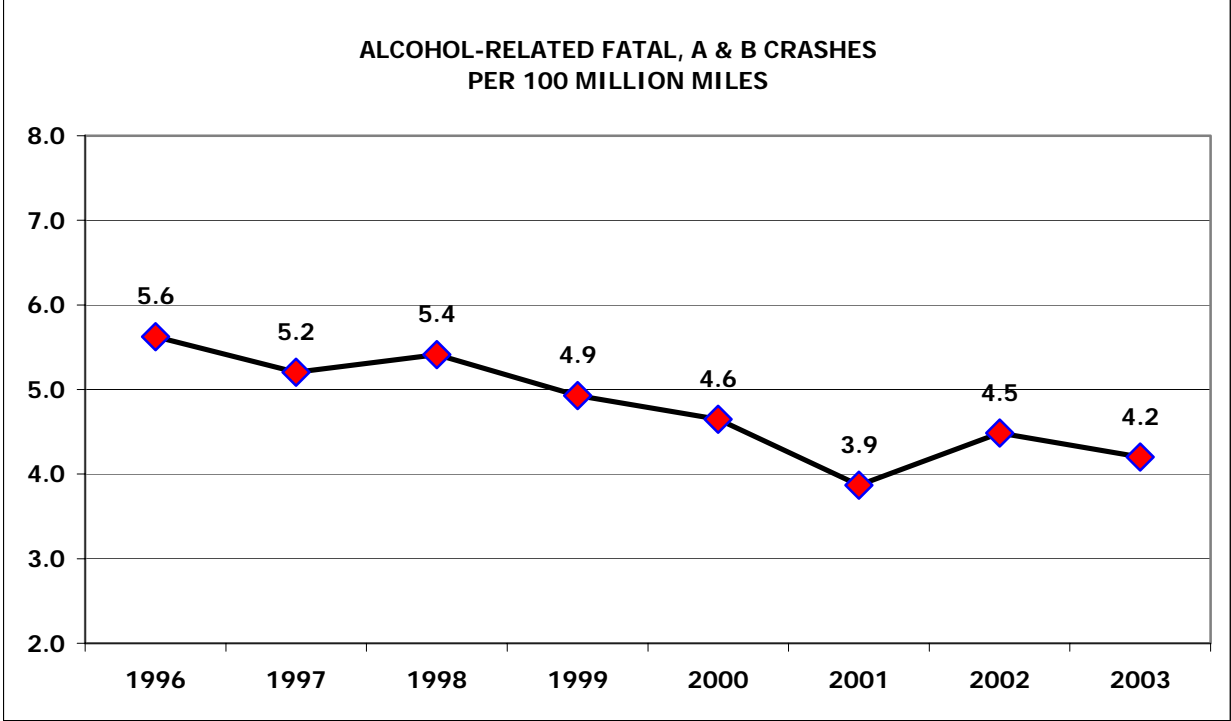
Ice blamed on I-80 bus crash

Emergency crews helped 17 injured passengers, one critically injured, from an overturned Greyhound bus after spinning on ice on the Interstate.

(Courtesy of The Kearney Hub)

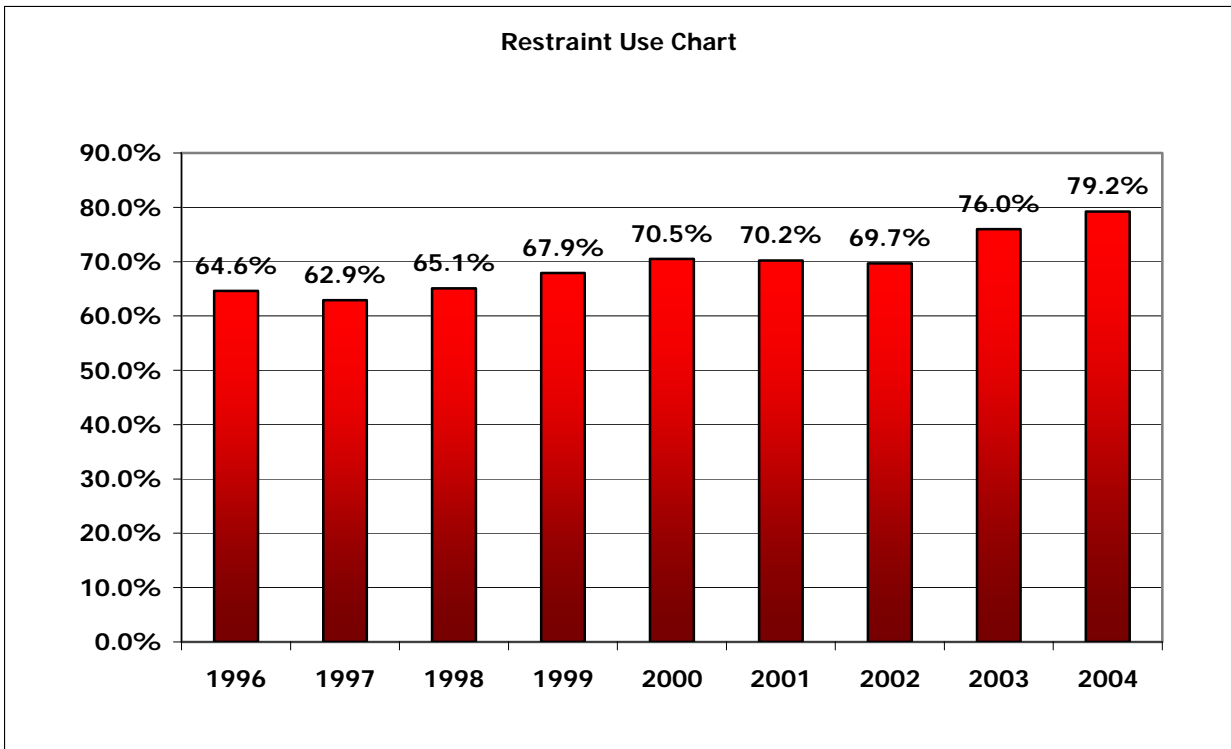
The goal was to reduce **Alcohol-Related Fatal, A and B Injury Crashes** by 4% (769).

	1996	1997	1998	1999	2000	2001	2002	2003
Alcohol Crashes (Fatal, A & B)	911	874	932	866	820	694	820	781
Alcohol Crash Rate	5.6	5.2	5.4	4.9	4.6	3.9	4.5	4.2

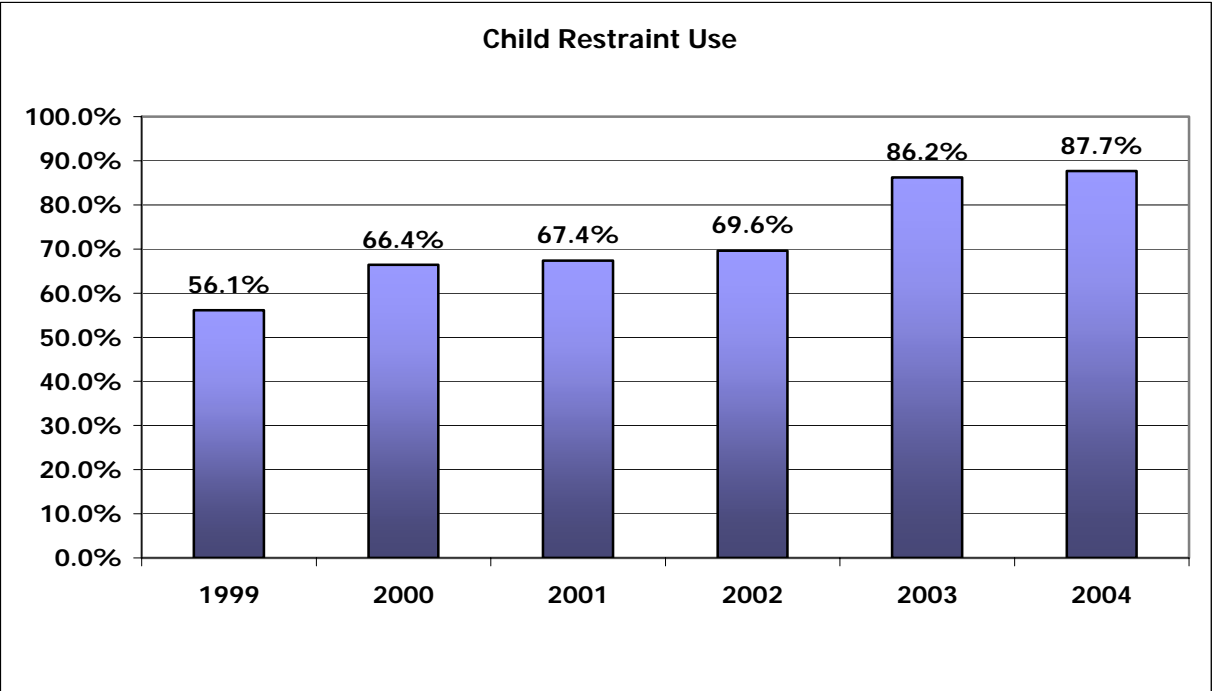


Partnered with Blue Cross Blue Shield (BC/BS) and Lamar Outdoor Advertising to produce 43 billboards posted in December 2004 in Omaha, Lincoln, North Platte, Hastings, Grand Island, and Kearney. The billboards tie in with radio messages "Don't Go To Jail Tonight. Don't Drink and Drive" paid for by BC/BS.

The goal was to increase safety belt usage to 80.3%. The observed **Occupant Restraint Use** in 2004 increased to 79.2%.



Child Restraint Use for children under age six increased from 86.2 % in 2003 to 87.7% in 2004.

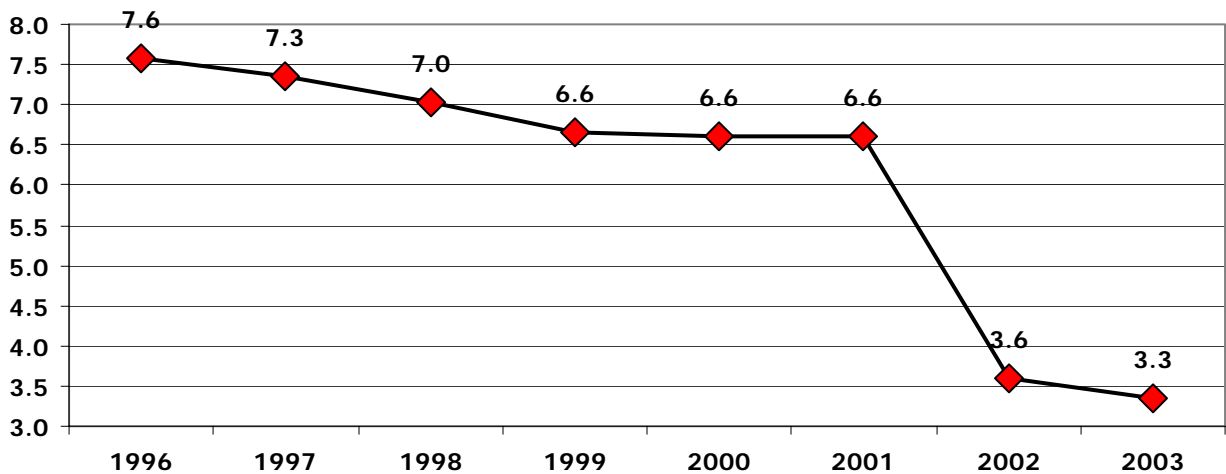


A Press conference was held November 18, 2003 in Lincoln announcing the results of the 2003 statewide Child Safety Seat Survey (86.2%). Speakers included Fred Zwonechek (NOHS), Senator Mike Foley, and Jeanne Bietz with Nebraska Health and Human Services System.

The FY2004 goal was to reduce **Speed-Related Fatal, A and B Injury Crashes** by 4% (445). The number of speed-related fatal, A and B injury crashes decreased from 1,187 to 656 while the speed-related crash rate per 100 million vehicle miles traveled declined 44.7%. In 2002 a change on the crash report form field called "Contributing Circumstances, Driver" limited the number of selections from three to one.

	1996	1997	1998	1999	2000	2001	2002	2003
Speed Crashes (Fatal, A & B)	1,226	1,234	1,212	1,168	1,167	1,187	656	622
<u>Speed Crash Rate</u>	7.6	7.3	7.0	6.6	6.6	6.6	3.6	3.4

**SPEED-RELATED CRASHES (FATAL, A & B)
PER 100 MILLION MILES**

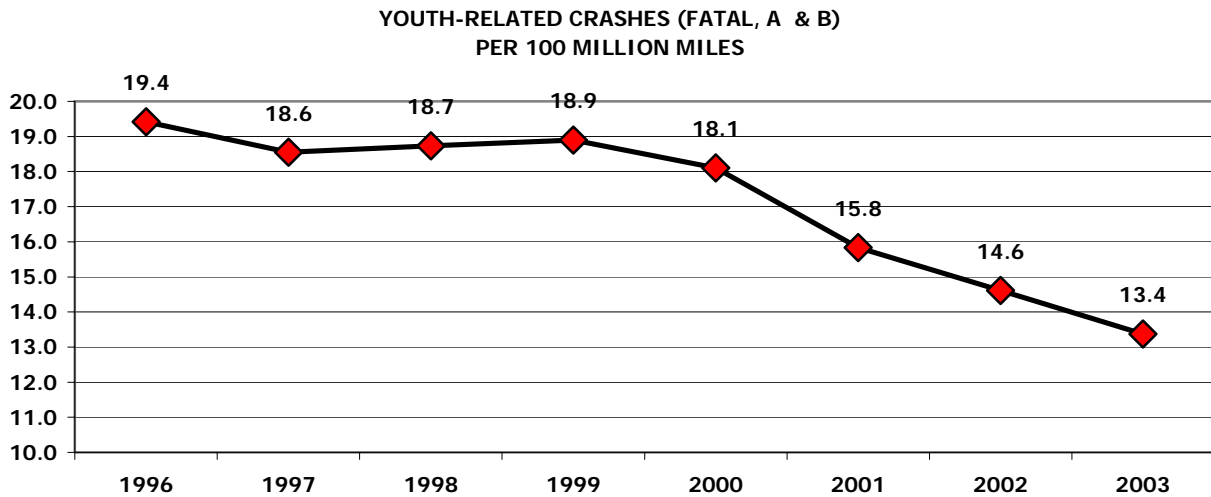


A Press Conference was held in April at the Law Enforcement Center in South Sioux City, Nebraska.

The Nebraska Department of Motor Vehicles' Office of Highway Safety and AAA Nebraska awarded four agency "speed monitoring" trailers for winning the Nebraska Law Enforcement Occupant Protection Challenge competition.

The goal was to reduce **Youth-Involved Fatal, A and B Injury Crashes** for young people ages 16 through 20 by 4% (2,224). The number declined by 12.5% between 2001 and 2003. The number of crashes involving these drivers declined from 2,841 to 2,486.

	1996	1997	1998	1999	2000	2001	2002	2003
Youth Crashes (Fatal, A & B)	3,144	3,115	3,226	3,320	3,193	2,841	2,672	2,486
Youth Crash Rate	19.4	18.6	18.7	18.9	18.1	15.8	14.6	13.4



Four girls escape serious injuries; officer credits use of seat belts

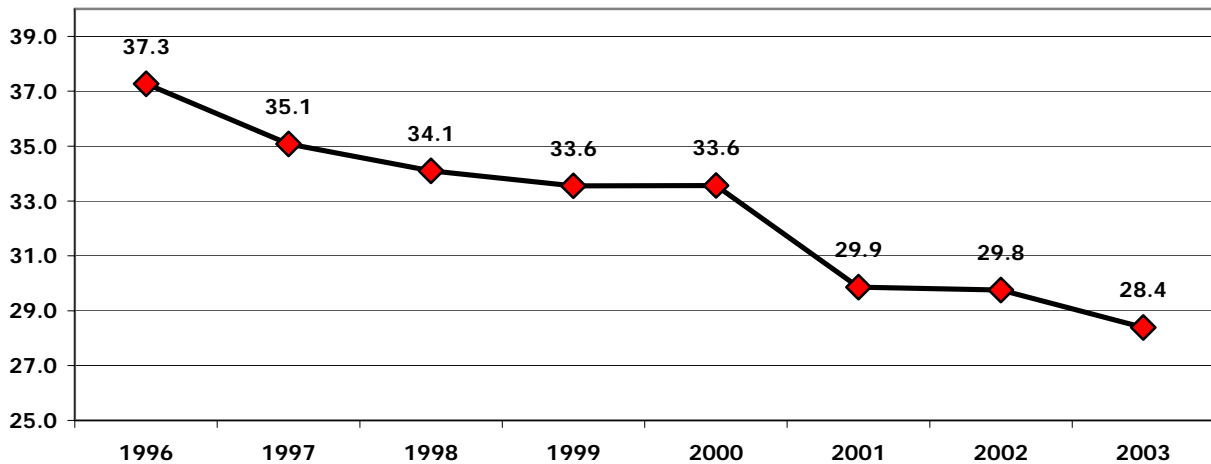
Four Stratton teenage girls escape serious injuries in a one car rollover. The driver lost control on the highway, rolled sideways, hit an embankment and rolled several more times, traveling 494 feet. The investigating officer credits use of seat belts for saving the driver and her three passengers from serious injuries.
(Photo provided by McCook Daily Gazette/Gloria Masoner)

2004 DMV Annual Report

The goal was to reduce **All Other Factors Fatal, A and B Injury Crashes** (minus Alcohol and Speed) by 4% (4,798).

	1996	1997	1998	1999	2000	2001	2002	2003
All Other Factors Crashes (Fatal, A & B)	6,036	5,891	5,872	5,896	5,921	5,356	5,440	5,279
All Other Factors Crash Rate	37.3	35.1	34.1	33.6	33.6	29.9	29.8	28.4

**"ALL OTHER FACTORS" CRASHES (FATAL, A & B)
PER 100 MILLION MILES**



A Ford Explorer went off washboard road, into the ditch and rolled sideways, coming to rest on its top. Restraints were used. (Courtesy of York News – Times/Jeff Lytle)

Conclusions

In the FY2004 Highway Safety Plan, a more aggressive position in goal setting was established in several areas, including the overall goal. While no specific goal was reached, significant progress was achieved in every area.

Child restraint and safety belt use reached all time highs. Children under age six rose to 87.7% and safety belt use for drivers and front seat passengers increased to 79.2%.

Fatal, A and B Injury Crashes continue to decrease in number from (6,916) 4.4% in 2002 to (6,682) 3.4% in 2003.

Alcohol-related fatal and injury crashes decreased by 4.8% from the previous year.

Speed-related fatal and injury crashes decreased by 5.2%, from 656 to 622 in 2003.

Youth-related fatal and injury crashes decreased by 7%, from 2,672 to 2,486.

All Other Factors fatal and injury crashes decreased by 3%, from 5,440 to 5,279.

While the total miles driven increased by 1.7 percent in Nebraska during 2003, the number of fatal crashes decreased (5.5%) along with a decline in injury crashes (5.1%) and the number of persons injured declined from 23,369 in 2002 to 21,984 in 2003. The total number of reported crashes increased slightly from 46,236 in 2002 to 46,602 in 2003.

Nebraska did experience measured success in reducing the total number of reported crashes and injuries while the number of miles driven increased by 1.7% in 2003. Utilizing the crash rates per miles driven reveals an even larger accomplishment. Traffic deaths decreased by 4.6% (307 in 2002 to 293 in 2003).

Nebraska Annual Evaluation Report Summary

Nebraska Annual Comparative Data								
	1996	1997	1998	1999	Progress Report Data CY2000-2003			
					2000	2001	2002	2003
Fatalities (F)	293	302	315	295	276	246	307	293
Serious Injuries (Defined as: Disabling Injury (A))	2,677	2,523	2,515	2,508	2,524	2,421	2,431	2,232
Fatalities & Serious Injuries Combined (F/A)	2,970	2,825	2,830	2,803	2,800	2,667	2,738	2,525
Vehicles Miles (Millions)	16,194	16,791	17,219	17,570	17,637	17,940	18,281	18,592
Fatality Rate/(100 million VMT)	1.8	1.8	1.8	1.7	1.6	1.4	1.7	1.6
Fatality & Serious Injury Rate / (100 million VMT)	18.3	16.8	16.4	16.0	15.9	14.9	15.0	13.6
Population	1,637,311	1,656,870	1,636,885	1,674,074	1,711,263	1,711,263	1,711,263	1,711,263
Fatality Rate /100K Population	17.9	18.2	19.2	17.6	16.1	14.4	17.9	17.1
Fatality & Serious Injury Rate /100K Population	181.4	170.5	172.9	167.4	163.6	155.8	160.0	147.6
Alcohol Related Fatalities	88	94	112	124	98	89	115	100
Alcohol Related Fatalities as a Percentage of All Fatalities	30.0%	31.1%	35.6%	42.0%	35.5%	36.2%	37.5%	34.1%
Alcohol Related Fatality Rate /(100 million VMT)	0.54	0.56	0.65	0.71	0.56	0.50	0.63	0.54
Percent of Population Using Safety Belts*	64.60%	62.90%	65.10%	67.90%	70.50%	70.16%	69.60%	76.05%
Percent of unbelted drivers and occupants seriously injured or killed in a crash	55.17%	54.29%	56.89%	56.30%	52.63%	55.58%	54.81%	45.72%

*Safety belt percentages from "The Buffalo Beach Company" statewide observation Safety Belt Use Surveys

Nebraska Motorcycle Safety Education

The Nebraska Office of Highway Safety is responsible for the administration of the Motorcycle Safety Education act. A provision of this Act is oversight of motorcycle rider training courses. Successful completion of the beginning Motorcycle Safety Education Course will allow the applicant to waive both the written and road test at the DMV driver license examination station to receive a Class "M" endorsement.

Currently eight sites are certified by DMV to offer basic motorcycle safety education training. The site sponsors and their locations are (1) National Safety Council - Greater Omaha Chapter with ranges in Omaha and at Offutt AFB, (2) Southeast Community College – Lincoln Campus with a Lincoln range site, (3) Central Community College in Hastings with ranges in Hastings and Columbus, (4) Western NE Motorcycle Training with a range in Scottsbluff, (5) Frontier Harley-Davidson/Buell with a range in Lincoln, (6) Western Iowa Tech College with a range in Sioux City, Iowa (7) Dillon Brothers Harley-Davidson with a range between Omaha and Elkhorn, and (8) Northeast Community College with a Norfolk range site.

A total of 1,632 applicants participated in the beginning rider course during 2004. Of those, 1,490 successfully completed the training. The Nebraska Office of Highway Safety also sponsored an Instructor Preparation Course in which seven new instructors were certified to teach the beginning rider course. In addition, thirty-three current instructors were updated to teach the new Motorcycle Safety Foundation beginning course – the Basic Rider Course, or BRC.

Office of Juvenile Justice and Delinquency Prevention

The Nebraska Office of Highway Safety has been designated by the Governor to administer the Office of Juvenile Justice and Delinquency Prevention's (OJJDP) Enforcing Underage Drinking Laws Grant. As a result, an Underage Drinking Advisory Task Force has been established and grants have been awarded to Project Extra Mile, a non-profit organization that represents community coalitions in implementing local activity targeting underage alcohol use. Funding provides local community coalition staff assistance, training, educational materials, travel and overtime enforcement targeting underage drinking laws.

Nebraska counties with OJJDP coalition efforts are: Douglas, Sarpy, Hall, Adams, Madison, Dawson, Scotts Bluff and Platte. Annual funding received by Nebraska for these efforts is approximately \$360,000. The community coalitions utilize the following work groups in their effort: Public Policy, Youth in Action, Enforcement & Adjudication, Awareness & Access and Information & Education. Communities utilize the Project Extra Mile model to achieve the mission to "Create a community consensus that clearly states that underage alcohol use is illegal, unhealthy and unacceptable."

The enforcement emphasis is directed to underage saturation patrols, large party patrols, alcohol retailer compliance checks and shoulder tap operations that target adults purchasing alcohol for minors.

Traffic Violation Diversion Program

Beginning in 2003, as a result of new legislation, the DMV is responsible for establishing rules and regulations and the oversight of traffic violation pre-file and pre-trial diversion programs offered by individual jurisdictions.

After the rules and regulations process, the new standards and guidelines were adopted and implemented. The new requirements included that each jurisdiction must submit an application to the DMV to obtain approval to offer the traffic violation diversion program. Standards for classes, including length of time, curriculum offered, fees charged, frequency of participation and the sharing of records are some of the criteria reviewed to determine if the program merits approval.

The responsibility of administering the Traffic Violation Diversion Program is being shared by the Legal and Office of Highway Safety Divisions. During 2004, a total of 81 Nebraska jurisdictions were awarded approval certificates to offer the programs. The 71 counties and 10 cities contract with one or more of the five approved course providers in the state. A total of 171 instructors have also been certified to offer the approved traffic violation diversion program.

The legislature restricted the types of traffic violations that are allowed to be diverted through participation in the diversion program and limited the number of times that an individual can participate to once every three years. In addition, a federal requirement restricts any individual with a commercial driver license endorsement from participating in a traffic violation diversion program.

**DRIVER AND VEHICLE
RECORDS DIVISION**

The responsibilities of the Driver and Vehicle Records Division include:

- Update and maintain the Nebraska Traffic Safety Information file
- Maintain the Nebraska Vehicle Title and Registration Information file
- Update and maintain the Nebraska Motor Vehicle Insurance Database
- Provide prompt, reliable and accurate vehicle and driver information
- Ensure that all standards are met in the driver license, title and registration, and handicapped parking permit issuance processes
- Develop and supply all related forms, plates, permits and applications

Major Activities in 2004:

- All initial plate orders for the 2005 plate series were placed and production was completed by December 31, 2004.
- The specialty plate file was updated and we began sending out renewal notices in November for the required re-application process for handicapped license plates. With the 2005 license plate re-issuance, we are required to have all plate holders reapply and re-certify their qualifications for a handicapped license plate.
- Implementation of LB 559. This legislation included supplying data to the Nebraska Organ Recovery System for all individuals who have indicated a desire to be an organ donor. This data was then used to create the Organ Donor Registry.
- Implementation of LB 560, effective July 16, 2004. This legislation included salvage and abandoned motorboats, ATV's and mini-bikes; a fee increase for bulk vehicle records; offering of driver record header record information; assembled ATV's and mini-bikes; and, a change in the definition of commercial and utility trailers. This legislation also included a change in the process for owner-retained salvage vehicles with a March 20, 2004 effective date.
- Implementation of LB 488, 2002 Legislative Session, effective July 1, 2004. This legislation authorized the creation of the Nebraska Insurance Database. The Department was able to meet the statutory deadline for implementation and complete the project under budget.
- Began transmitting weekly batch files of motor vehicle title data to the National Motor Vehicle Title Information System in June 2004.
- Implementation of the digital watermark on our digital driver licenses was completed in May 2004. A digital watermark (embedded data) is a state of the art security feature that is imperceptible to humans, but can be read by computers and other devices enabled with special secure software and a hardware reader. A digitally watermarked driver license offers many inspection applications and capabilities, such as authentication, forensic analysis and secure data access. The absence of a digital watermark or a mismatch of data between multiple digital watermarks on a document identifies counterfeit or tampering attacks.

- The motor vehicle tax calculation process was updated to more accurately reflect the MSRP/GVWR of registered vehicles that enabled a more accurate collection of motor vehicle taxes by the county treasurers.
- Implementation of law enforcement electronic access to DMV stored driver license images and signatures through the Nebraska Criminal Justice Information System. This project was a collaboration effort between DMV and the Nebraska Commission on Law Enforcement and Criminal Justice.
- All Division forms available via the website were updated to be interactive to allow our customers to complete the forms online, print and mail to our office.

Other responsibilities include:

- Approve and maintain self-insurance companies in Nebraska.
- Compile and maintain a list of insurance companies licensed to do business in Nebraska for use by the county treasurers.
- Process license plate and validation sticker orders from 93 counties.
- Complete requests for vehicle and driver records.
- Issue handicapped parking permits.
- Design, order and distribute forms used by county officials in the issuance of driver licenses, titles and registrations.
- Maintain records of all licensed drivers and all vehicles titled and registered in Nebraska.
- Maintain records of all vehicles insured in this state and disseminate such information to the county treasurers for use in registering vehicles.
- Provide vehicle information concerning safety recall campaigns.
- Issue message, spirit, sample, repossession, amateur radio, ex-prisoner of war, purple heart, handicapped, Disabled American Veteran, Pearl Harbor survivor, transporter, boat dealer trailer, antique, and film vehicle license plates.
- Prepare, verify, microfilm, and enter data from forms used in the driver license testing and issuance process from all 93 counties.
- Provide Help Desk assistance to county treasurers and county clerks in the issuance of driver licenses, titles and registrations.
- Provide assistance to the general public and law enforcement in driver license, title, registration and handicapped parking permit related areas.
- Maintain files on medical and vision rechecks, out-of-state citations, microfilm and CD-ROM.
- Transfer information from one state DMV to another.
- Provide clearance and military exemption information.

DRIVER AND VEHICLE RECORD STATISTICS – 2004

Driver's Licenses Issued	263,169
Driver Permits Issued	63,953
Identification Cards Issued	30,677
Duplicate/Replacement Licenses/Permits Issued	97,133
TOTAL Driver's License/Permits/ID Cards Issued	454,932
Driving Records Processed through DMV	43,591
Driving Records Processed through Nebraska Online	961,540
TOTAL Driving Records Processed	1,005,131
Medical/Vision Recheck Notice Letters	1,109
Medical/Vision Recheck Cancel Warning Letters	229
Medical/Vision Recheck Licenses Cancelled	89
Surrendered Licenses Processed	23,261
Clearance and Military Letters Processed	598
Monies received from the sale of vehicle record information – DMV	\$136,462.08
Monies received from the sale of vehicle record information – Nebraska Online	\$76,881.00
Message Plates processed	
New	5,890
Renewal	49,525
Cornhusker Spirit Plates processed	
New	866
Renewal	6,543
License Plates Issued	
Sample License Plates	45
Amateur Radio	58
Ex-Prisoner of War	1
Purple Heart	35
Handicapped	938
Disabled American Veteran	53
Pearl Harbor	1
Plates/Registrations Issued	
Repossession	89
Transporter	2,426
Boat Dealer Trailer	104
Film Vehicle	0
Titles Issued	
Bonded	157
State	1,277
Duplicate	37,929
Corrected	7,405
Statewide	657,269
Titles Surrendered to Other States	93,816
Titles Marked Junked	7,058
Salvage Notices (effective 3/20/04)	545
Liens Noted	226,171
Misc. Issued	
Vehicle Identification Number Plates Issued	409
Hull Identification Number Plates Issued	45
Handicapped Permits Issued	35,157
Antique Plates/Registrations Issued	
Motorcycle	26
Motorcycle Vintage	3
Regular	523
Vintage	304
TOTAL Antique Plates	856

**2004 NEBRASKA LICENSED DRIVERS
BY COUNTY**

County	County Number	Licensed Drivers	County	County Number	Licensed Drivers
Adams	14	23,467	Jefferson	33	6,631
Antelope	26	5,972	Johnson	57	3,708
Arthur	91	372	Kearney	52	5,390
Banner	85	611	Keith	68	7,250
Blaine	86	469	Keya Paha	82	776
Boone	23	4,902	Kimball	71	3,317
Box Butte	65	9,560	Knox	12	7,230
Boyd	63	1,926	Lancaster	2	200,308
Brown	75	2,853	Lincoln	15	28,243
Buffalo	9	32,951	Logan	87	675
Burt	31	6,199	Loup	88	570
Butler	25	6,999	Madison	7	27,747
Cass	20	19,875	McPherson	90	449
Cedar	13	7,483	Merrick	46	6,301
Chase	72	3,457	Morrill	64	4,251
Cherry	66	4,856	Nance	58	3,083
Cheyenne	39	8,328	Nemaha	44	5,829
Clay	30	5,604	Nuckolls	42	4,127
Colfax	43	7,395	Otoe	11	12,316
Cuming	24	7,907	Pawnee	54	2,403
Custer	4	9,353	Perkins	74	2,583
Dakota	70	14,962	Phelps	37	7,702
Dawes	69	6,683	Pierce	40	6,281
Dawson	18	18,089	Platte	10	24,907
Deuel	78	1,751	Polk	41	4,511
Dixon	35	4,822	Red Willow	48	9,087
Dodge	5	28,706	Richardson	19	7,302
Douglas	1	359,612	Rock	81	1,366
Dundy	76	1,783	Saline	22	10,249
Fillmore	34	5,146	Sarpy	59	101,893
Franklin	50	2,890	Saunders	6	16,064
Frontier	60	2,313	Scotts Bluff	21	29,488
Furnas	38	4,200	Seward	16	12,552
Gage	3	17,998	Sheridan	61	4,715
Garden	77	1,932	Sherman	56	2,628
Garfield	83	1,593	Sioux	80	1,139
Gosper	73	1,738	Stanton	53	4,958
Grant	92	628	Thayer	32	4,679
Greeley	62	2,123	Thomas	89	631
Hall	8	41,053	Thurston	55	4,319
Hamilton	28	7,780	Valley	47	3,709
Harlan	51	3,057	Washington	29	15,467
Hayes	79	901	Wayne	27	6,803
Hitchcock	67	2,606	Webster	45	3,216
Holt	36	9,182	Wheeler	84	694
Hooker	93	642	York	17	11,497
Howard	49	5,298	Total		1,347,071

*Includes all permits (LPE,LPD,SCH,POP)

**NEBRASKA
2004 VEHICLE REGISTRATION**

TOTAL VEHICLES REGISTERED IN 2004
2,059,553

PASSENGER	
Regular	1,015,626
Amateur Radio	1,464
Message	38,980
Spirit	2,306
Spirit Message	3,325
Non-Resident	7,473
Handicapped	7,101
Antique	10,835
Ex-Prisoner of War (ex-pow)	110
Pearl Harbor Survivor	33
Disabled American Veteran	268
Purple Heart	976
Thirty Day	123
TOTAL	1,088,620

MOBILE HOME	
Recreational	27,867
Self-Propelled	8,376
Message Recreational	87
Message Self-Propelled	167
Spirit Recreational	1
Spirit Self-Propelled	9
Spirit Message Recreational	2
Spirit Message Self-Propelled	9
TOTAL	36,518

BUS	
Non-Commercial	867
School	680
Commercial	387
Non-Resident	22
Local	44
TOTAL	2,000

GOVERNMENT	
Municipal	12,590
County	9,748
State	8,322
School District	6,929
TOTAL	37,589

TAX EXEMPT	
TOTAL	3,783

SNOWMOBILE	
TOTAL	810

TRAILER	
Utility	136,809
Farm	56,795
Fertilizer	23,155
Commercial	21,696
Pole & Reel	426
Non-Resident	370
Transporter	2,375
Semi	3,710
Apportioned Trailer Units	67,320
TOTAL	312,656

DEALER	
Passenger	11,834
Personal Use	394
Motorcycle	371
Trailer	571
Snowmobile	3
Boat Dealer Trailer	96
Repossession	90
TOTAL	13,359

TRUCK	
Commercial	323,108
Farm	148,278
Non-Resident Commercial	1,409
Local	1,060
Message Commercial	10,833
Spirit Commercial	539
Spirit Message Commercial	813
Message Farm	1,551
Spirit Farm	23
Spirit Message Farm	101
Special Mobile Equipment (SME)	1,054
Soil & Water	456
Farm Semi - Tractor/Trailer	5,321
10% Reduction	236
Apportioned Power Units	36,520
TOTAL	531,302

MOTORCYCLE	
Regular	30,924
Non-Resident	363
Message	1,453
Antique	166
Handicapped	7
Vintage	3
TOTAL	32,916

2004 DMV Annual Report

2004

COUNTY	NO.	PLATE TYPE																								BUS		
		Passenger	Handicap	Mtrcyc	Am. Radio	Mobile Home	Tax Exempt	Message	Spirit	Mess.	Surv	PH	Ex-POW	Purple DAV	Heart	Antiq.	Vin-tage	Motor-cycle	Snow-mobile	Comm.	Apport-ioned	Farm	Farm Semi	Local Water	Soil-SME	10% Red.	Comm	Non-Comm
ADAMS	14	17,198	155	0	26	812	216	1,022	56	58	1	2	14	24	44	0	568	1	6,638	2,027	61	27	9	6	0	0	0	6
ANTELOPE	26	4,430	18	0	16	291	10	200	5	9	1	0	2	7	24	0	203	7	1,728	2,368	125	8	5	20	0	0	0	
ARTHUR	91	229	1	0	1	19	0	13	0	0	0	0	0	0	0	0	3	0	49	315	3	0	0	3	0	0	0	
BANNER	85	457	1	0	1	32	0	15	4	2	0	0	0	0	0	0	14	0	77	617	44	0	0	9	0	0	0	
BLAINE	86	260	3	0	0	27	1	25	1	1	0	0	0	1	0	0	6	0	68	408	1	0	0	2	0	0	0	
BOONE	23	3,664	19	0	11	194	3	168	23	18	0	0	0	8	21	0	111	4	1,272	1,857	113	0	7	12	6	0	0	
BOX BUTTE	65	7,104	64	0	3	459	43	258	24	23	0	0	1	4	50	0	419	7	3,312	1,900	68	14	0	20	57	1	5	
BOYD	63	1,374	8	0	2	69	3	38	3	3	0	1	0	1	9	0	56	5	423	812	2	0	1	0	0	0	0	
BROWN	75	1,847	14	0	1	120	2	71	3	8	1	0	0	3	2	0	62	7	808	1,168	17	3	9	15	1	0	1	
BUFFALO	9	24,639	163	0	40	1,072	175	1,266	97	90	1	1	15	34	62	0	918	9	9,925	3,211	148	13	2	63	6	3	52	
BURT	31	4,343	36	0	4	209	3	329	6	20	1	3	0	2	20	0	182	12	1,822	1,518	104	6	6	0	0	0	0	
BUTLER	25	5,732	34	0	5	227	4	317	9	11	0	3	0	7	28	0	202	0	1,953	2,344	26	6	7	5	2	0	2	
CASS	20	14,850	122	0	23	1,042	47	1,009	47	76	0	2	5	24	31	0	698	48	6,600	2,013	59	4	11	10	0	3	14	
CEDAR	13	5,569	16	0	3	274	7	133	13	11	0	0	1	5	16	0	156	34	1,976	2,263	77	3	4	12	0	0	0	
CHASE	72	2,242	9	0	1	159	4	135	6	19	0	0	2	4	0	0	83	5	1,121	1,545	164	7	5	9	2	0	1	
CHEERY	66	3,236	24	0	2	198	8	162	5	15	0	0	2	2	9	0	118	4	1,229	2,227	16	3	0	15	0	0	12	
CHEYENNE	39	6,228	38	0	6	351	16	182	27	16	0	0	1	5	30	0	235	1	2,684	1,738	43	10	0	7	5	0	2	
CLAY	30	4,298	37	0	2	306	1	258	14	11	0	0	2	1	25	0	124	0	1,953	1,863	152	11	7	18	0	0	1	
COLFAX	43	6,249	21	0	14	243	12	295	21	35	0	0	0	5	18	0	148	10	1,981	1,670	76	17	0	10	0	0	0	
CUMING	24	5,899	30	0	6	256	39	219	13	15	0	1	0	7	18	0	142	9	2,041	2,199	10	8	1	0	0	0	2	
CUSTER	4	6,742	57	0	13	486	21	316	7	16	1	3	2	4	24	0	243	15	2,302	4,135	172	7	29	47	14	0	0	
DAKOTA	70	11,294	86	0	16	418	1	296	47	45	0	1	1	13	0	0	330	63	3,827	684	40	1	0	4	0	0	1	
DAWES	69	4,403	28	0	15	273	40	139	7	9	1	3	1	5	8	0	210	10	1,834	1,352	7	5	4	17	1	1	1	
DAWSON	18	13,574	123	0	10	586	39	599	37	52	0	3	3	16	42	0	355	5	5,587	3,004	15	3	2	20	4	0	5	
DEUEL	78	1,336	8	0	0	82	7	25	2	2	0	1	0	0	2	0	53	0	647	723	6	0	3	0	0	0	0	
DIXON	35	3,832	23	0	5	216	0	157	12	9	0	0	0	4	10	0	108	19	1,339	1,175	55	1	0	10	1	0	0	
DODGE	5	21,625	175	0	58	946	39	1,298	73	79	1	2	3	22	81	0	917	6	8,109	1,806	102	27	3	8	1	0	67	
DOUGLAS	1	280,165	1,657	1	272	4,128	1,507	14,339	725	1,256	8	23	26	188	490	0	6,470	139	60,962	672	4	254	0	20	2	288	45	
DUNDY	76	1,307	10	0	1	78	0	50	6	3	0	0	0	0	3	0	39	0	524	1,114	55	0	0	3	0	0	0	
FILLMORE	34	3,815	25	0	1	247	4	229	10	21	0	0	2	6	36	0	131	0	1,700	1,861	173	14	2	50	0	0	3	
FRANKLIN	50	2,094	32	0	2	116	4	83	6	4	0	0	4	2	20	0	54	0	783	1,435	5	0	4	1	0	0	1	
FRONTIER	60	1,731	8	0	1	136	3	73	0	5	0	0	0	3	5	0	58	0	703	1,423	49	0	8	0	0	0	0	
FURNAS	38	3,236	44	0	13	231	22	171	6	12	1	0	2	4	13	0	87	3	1,445	1,409	98	1	17	5	16	0	0	
GAGE	3	13,561	70	0	15	746	62	695	38	62	1	4	15	97	0	350	0	5,508	2,951	44	30	11	11	0	0	0	4	
GARDEN	77	1,381	7	0	2	80	2	51	1	2	0	0	3	4	6	0	39	0	531	904	14	2	0	6	3	0	0	
GARFIELD	83	1,129	7	0	4	56	0	49	2	1	0	0	0	2	0	0	36	1	466	607	7	3	0	12	0	0	5	
GOSPER	73	1,290	18	0	0	73	2	95	7	8	0	0	0	5	4	0	35	1	490	801	10	0	3	11	1	0	0	
GRANT	92	373	2	0	0	28	1	29	0	0	0	0	1	0	1	0	8	0	160	367	2	0	0	6	0	0	0	
GREELEY	62	1,696	13	0	2	66	3	74	4	10	0	1	1	1	6	0	43	4	565	986	35	1	24	0	7	0	1	
HALL	8	32,302	233	0	40	1,242	103	1,622	62	136	2	4	18	20	99	0	1,012	9	12,497	2,296	249	44	10	33	0	8	64	
HAMILTON	28	5,700	30	1	6	315	8	324	29	32	0	1	4	11	42	0	230	3	3,326	2,029	239	9	3	23	1	0	0	
HARLAN	51	2,209	21	0	3	147	7	126	8	5	0	2	1	3	4	0	116	1	922	1,173	35	0	4	0	0	0	1	
HAYES	79	664	2	0	1	35	0	14	3	1	0	0	0	2	0	0	17	0	132	862	51	0	0	11	2	0	0	
HITCHCOCK	67	1,930	9	0	2	113	3	46	4	9	0	0	1	2	0	0	54	0	929	1,032	5	0	0	14	0	0	1	
HOLT	36	6,561	30	0	8	414	24	283	24	33	0	1	2	10	13	0	229	30	2,302	3,512	75	8	1	16	28	3	0	
HOOKER	93	510	0	0	0	32	2	13	2	2	0	0	1	2	0	0	10	1	208	316	0	1	1	6	0	0	0	
HOWARD	49	3,985	30	0	3	238	2	238	9	15	0	0	1	8	33	0	104	7	1,527	1,724	82	8	21	2	0	0	1	
JEFFERSON	33	4,908	46	0	13	326	59	245	21	18	1	1	2	9	24	0	134	7	2,238	1,804	39	7	5	4	0	3	19	
JOHNSON	57	2,896	19	0	1	128	1	122	5	6	0	1	0	1	24	0	76	0	1,154	1,011	22	3	7	4	0	0	1	
KEARNEY	52	4,110	33	0	7	264	24	228	20	18	0	0	1	5	27	0	190	1	1,770	1,747	156	3	11	12	1	0	0	
KEITH	68	5,383	80	0	11	394	10	293	18	18	0	0	0	7	6	0	187	2	2,443	1,451	13	0	4	11	0	0	0	
KEYA PAHA	82	507	5	0	0	35	1	33	0	0	0	0	0	1	4	0	9	0	113	623	5	0	0	2	0	0	6	3
KIMBALL	71	2,403	21	0	1	229	0	95	4	7	0	1	0	2	1	0	57	0	1,054	837	47	0	0	43	0	0	0	
KNOX	12	5,201	55	0	8	283	4	168	5	6	1	1	0	9	32	0	171	16	1,873	2,268	62	15	13	9	0	0	1	
LANCASTER	2	146,488	913	4	296	3,593	337	8,609	386	681	1	18	58	113	1,134	0	4,298	40	39,257	3,093	105	195	2	12	2	28	307	
LINCOLN	15	21,321	216	0	41	1,393	53	932	75	100	0	2	10	18	43	0	800	5	8,431	4,107	43	17	3	35	0	0	44	
LOGAN	87	466	1	0	0	48	0	42	5	6	0	0	0	0	0	0	17	2	119	489	28	0	0	2	1	0	0	
LOUP	88	424	6	0	2	32	0	25	0	1	0	0	0	2	2	0	16	0	116	415	3	0	2	1	0	0	2	
MADISON	7	20,877	139	0	28	982	131	1,034	66	83	0	1	1	31	136	0	640	30	7,751	2,185	119	36	5	20	3	2	37	
MCPHERSON	90	290	0	0	0	17	0	6	0	0	0	0	0	0	1	0	5	0	55	355	4	0	0	5	1	0	0	
MERRICK	46	4,784	38	0	3	252	11	252	16	12	1	0	4	6	9													

2004 DMV Annual Report

COUNTY	NO.	BUS			NON-RESIDENT					TRAILER					DEALER					GOVERNMENT			2004 Total				
		Loc	Sch	Comm	Motor		30 Day	Trlr	Comm.	Utility	Farm	Semi	Fert-lizer	Apportioned	Pole Reel	Pass-enger	Per-sonal	Motor-cycle	Trans-porter	Boat Trlr	Snow-Re-po	mobile		State	Co.	Muni-cipal	School District
					Bus	cycle																					
ADAMS	14	0	1	0	0	0	2	2	0	672	2,522	846	55	866	239	10	16	16	0	0	0	0	148	302	172	34,701	
ANTELOPE	26	0	0	1	0	0	0	0	1	164	1,121	915	55	417	68	0	0	2	0	0	0	0	112	134	80	12,576	
ARTHUR	91	0	0	0	0	0	0	0	0	6	69	152	0	0	0	0	0	0	0	0	0	0	8	0	8	970	
BANNER	85	0	0	0	0	0	0	0	0	11	79	267	1	0	0	0	0	0	0	0	0	0	24	0	17	1,757	
BLAINE	86	0	0	0	0	0	0	0	0	11	23	273	0	0	0	0	0	0	0	0	0	0	26	2	25	1,250	
BOONE	23	0	0	0	0	0	0	0	0	96	743	758	68	414	53	2	1	0	0	0	0	0	75	89	44	9,881	
BOX BUTTE	65	0	0	1	0	1	2	4	1	140	1,613	607	27	234	58	2	0	5	1	0	0	0	80	149	43	16,873	
BOYD	63	0	2	0	0	0	0	0	0	24	249	405	4	37	12	0	0	0	0	0	0	0	49	15	43	3,715	
BROWN	75	0	0	0	0	0	0	0	0	88	520	570	4	158	48	2	2	4	0	0	0	0	77	60	14	5,792	
BUFFALO	9	0	2	5	0	1	14	3	7	569	5,057	1,199	276	380	375	7	10	35	0	0	0	0	201	231	160	50,554	
BURT	31	0	0	0	0	0	0	1	0	53	979	429	29	232	47	5	2	4	0	0	0	0	83	96	69	10,688	
BUTLER	25	0	11	0	0	0	0	0	0	112	1,055	918	151	496	25	2	0	4	0	0	0	0	143	88	57	14,014	
CASS	20	0	12	82	0	12	230	0	33	231	3,393	543	20	219	189	3	6	10	0	0	0	156	158	129	32,191		
CEDAR	13	0	10	0	0	0	1	0	0	99	1,203	780	35	149	62	0	2	9	0	0	0	0	74	118	84	13,214	
CHASE	72	0	0	0	0	0	0	0	1	62	732	586	26	426	60	1	1	2	0	0	0	0	70	69	66	7,698	
CHERRY	66	0	0	2	0	0	0	0	0	92	893	1,386	14	0	58	2	1	4	0	0	0	0	188	70	35	10,100	
CHEYENNE	39	0	0	2	0	0	0	1	1	101	1,427	397	24	96	75	6	6	4	0	0	0	0	106	149	100	14,163	
CLAY	30	0	0	0	0	0	0	2	0	145	955	642	77	1,062	44	1	2	4	0	0	0	0	51	138	82	12,319	
COLFAX	43	0	0	0	0	0	0	5	0	163	717	578	39	405	64	4	0	1	0	0	0	0	52	128	51	13,075	
CUMING	24	0	0	0	0	0	1	2	0	167	1,144	716	12	268	80	3	0	3	0	0	0	0	32	93	53	13,519	
CUSTER	4	0	0	0	0	0	1	0	0	293	1,333	1,799	42	379	64	2	2	6	0	0	0	0	199	144	119	19,058	
DAKOTA	70	0	17	0	0	0	0	2	0	355	1,857	258	63	37	226	3	13	9	0	0	0	1	82	163	58	20,384	
DAWES	69	0	1	0	0	0	0	0	0	77	913	643	1	1	142	5	5	7	0	0	0	2	115	112	30	10,500	
DAWSON	18	0	1	0	0	0	0	0	0	578	2,628	1,212	1	760	212	2	1	9	0	0	0	144	275	103	30,029		
DEUEL	78	0	0	0	0	0	0	0	0	22	296	235	0	280	3	0	0	0	0	0	0	0	31	43	16	3,901	
DIXON	35	0	0	0	0	0	0	0	0	42	742	381	30	67	19	1	0	3	0	0	0	0	47	110	40	8,493	
DODGE	5	0	11	3	0	2	4	2	3	399	3,424	505	130	393	356	11	22	35	0	0	0	0	75	425	110	41,366	
DOUGLAS	1	29	246	92	0	28	583	50	15	2,890	16,291	98	134	0	2,701	70	77	37	0	0	1	1	1,196	1,828	703	400,801	
DUNDY	76	0	0	0	0	0	0	0	0	63	238	439	0	6	10	0	0	0	0	0	0	0	57	28	33	4,145	
FILLMORE	34	0	8	1	0	0	0	0	1	191	689	638	47	610	25	2	0	1	0	0	0	0	57	101	52	10,788	
FRANKLIN	50	0	0	1	0	0	1	0	1	64	399	543	1	266	2	0	0	0	0	0	0	0	65	79	26	6,149	
FRONTIER	60	0	0	0	0	0	4	0	0	43	486	566	6	220	5	0	0	0	0	0	0	0	81	27	59	5,765	
FURNAS	38	0	0	1	0	0	0	0	0	175	812	533	25	419	58	3	0	2	0	0	0	0	72	124	76	9,176	
GAGE	3	0	13	1	0	0	5	1	3	478	2,173	875	65	86	174	11	4	19	0	0	0	1	133	262	160	28,747	
GARDEN	77	0	0	0	0	0	0	0	0	15	445	395	7	62	4	0	0	2	0	0	0	0	91	9	16	4,161	
GARFIELD	83	0	0	0	0	0	0	0	0	63	340	315	12	21	6	1	0	0	0	0	0	0	53	34	8	3,323	
GOSPER	73	0	0	0	0	0	0	0	0	54	349	360	0	1	4	1	0	0	0	0	0	1	45	7	10	3,760	
GRANT	92	0	0	0	0	0	0	0	0	25	140	240	3	0	3	0	0	3	0	0	0	0	37	5	5	1,535	
GREELEY	62	2	5	0	0	0	1	0	0	69	272	425	43	186	17	0	0	0	0	0	0	0	64	43	41	4,774	
HALL	8	0	10	5	22	0	2	4	2	708	4,862	816	250	1,069	707	17	26	35	0	0	0	0	204	276	197	61,336	
HAMILTON	28	0	0	0	0	0	0	0	2	183	1,300	729	25	705	37	1	0	5	0	0	0	0	100	96	78	14,657	
HARLAN	51	0	0	0	0	0	1	0	0	47	675	443	2	121	32	1	1	0	0	0	0	0	45	44	19	6,272	
HAYES	79	0	0	0	0	0	0	0	0	24	116	315	5	54	0	0	0	0	0	0	0	1	36	2	24	2,453	
HITCHCOCK	67	0	0	0	0	0	0	0	0	103	535	514	4	120	10	0	0	0	0	0	0	0	25	87	43	5,667	
HOLT	36	0	13	0	0	0	0	0	0	205	1,782	1,996	59	250	107	3	1	17	0	0	0	0	145	151	50	18,427	
HOOKER	93	0	0	0	0	0	0	0	0	38	131	178	3	0	0	0	0	0	0	0	0	0	27	17	19	1,618	
HOWARD	49	0	0	0	0	0	0	1	0	53	1,047	577	27	241	72	1	3	3	0	0	0	0	100	58	39	10,311	
JEFFERSON	33	0	3	0	0	0	0	0	0	125	880	680	41	622	51	7	3	3	0	0	0	0	113	90	81	12,669	
JOHNSON	57	0	0	0	0	0	1	0	0	63	411	369	3	74	46	2	0	0	0	0	0	0	77	36	46	6,671	
KEARNEY	52	0	0	0	0	0	1	2	0	77	1,002	593	34	556	45	1	0	4	0	0	0	0	78	73	57	11,203	
KEITH	88	0	1	0	0	0	0	2	0	182	1,869	675	5	234	108	10	1	10	0	0	0	0	75	103	49	13,725	
KEYA PAHA	82	1	0	0	0	0	0	0	0	5	211	288	0	0	0	0	0	0	0	0	0	0	29	3	5	1,972	
KIMBALL	71	0	2	0	0	0	0	1	0	122	506	283	11	1	75	7	0	1	0	0	0	0	59	69	29	6,039	
KNOX	12	0	27	0	0	0	0	0	0	118	1,229	976	16	92	66	4	3	5	0	0	0	0	77	170	55	13,055	
LANCASTER	2	1	94	13	0	0	49	10	7	3,050	11,909	1,037	407	353	1,381	50	49	56	0	0	0	0	518	1,278	547	230,806	
LINCOLN	15	0	5	2	0	0	7	2	3	370	5,177	1,920	32	358	238	16	13	21	0	0	0	0	241	329	188	46,627	
LOGAN	87	0	0	0	0	0	0	0	0	25	108	229	7	38	0	0	0	0	0	0	0	0	21	321	16	1,759	
LOUP	88	0	0	0	0	0	0	0	0	12	111	245	6	0	5	0	0	0	0	0	0	0	23	2	15	1,556	
MADISON	7	0	11	0	0	0	0	3	0	493	3,629	772	161	167	315	12	13	25	0	0	1	178	284	280	40,700		
MCPHERSON	90	0	0	0	0	0	0	0	0	10	50	245	3	0	0	0	0	0	0	0	0	0	15	0	0	1,152	
MERRICK	46	0	5	0	0	0	0	2	0	211	1,020	603	42	316	68	2	0	1	0	0	0	0	51	114	50	11,845	
MORRILL	64	0	3	0	0	0	0	0	0	143	659	668	32	244	23	7	1	5	0	0	0	0	84	83	50	8,551	
NANCE	58	1	0	0	0	0																					



An Affirmative Action/Equal Employment Opportunity Agency

This publication can be made available in an alternative format, for individuals with disabilities.

To request an accessible format, call the Department of Motor Vehicles at 402-471-3900 (Voice) or 402-471-4154 (TDD) or on the Internet at www.dmv.state.ne.us or write to this office at: Department of Motor Vehicles, Administration Division, 301 Centennial Mall South, Lincoln, NE 68509.

Department of Motor Vehicles
301 Centennial Mall South
Lincoln, NE 68509

24-00-00